

StreamCruiser

ST1700 Series

ITU-T H.721 IP-STB



A wonderful quality that you wanted is here.

Provision of movie contents via broadband is still growing.
We provide its core technology products.



Target service / offering various services

- / IP retransmission terrestrial digital broadcasting service
- / IP Multi channel broadcasting service
- / Video on demand service
- / Karaoke service
- / Broadcasters' archived content service

Major feature

- / Supports 1080i Full High Definition (H.264, MPEG2)
- / Supports IPv4, IPv6
- / Supports IP retransmission of ISDB-T (Integrated Service Digital Broadcasting-Terrestrial) and receiving ARIB data broadcasting
- / Supports IPTV forum Japan standard's DRM (Marlin)
- / Supports standard AL-FEC (ProMPEG+Raptor Hybrid)
- / Supports standard BML browser (ITU-T H.762)
- / Fast ECG with MetaData (TV-anytime, H.750)
- / IPTV standard Terminal Device (Basic Model) (H.721 and IPTV Forum Japan)
- / HDMI output available (supports HDCP)
- / Stable performance by Real time OS and Meta DB engine
- / StreamCruiser Middleware provides Time-to-Market service implementation
- / Update FirmWare by reliable STB management server (STManager®)
- / Space-saving design (able to put vertically or horizontally)



※we reserve the right to change specifications, designs and other information in this catalog without prior notice

Specification

System Main Device

The following are ST1700 Series information

No	Component	Detail
1	CPU	MIPS 32bit, 400MHz Dual-core
2	Media decoder	H.264 / MPEG2 Full HD (~ 1080i)
3	Flash ROM	64Mbyte
4	DDR2-SDRAM	512Mbyte

Operational Environment

A typical example for specification

No	General specification	Specification
1	Operating Temperature	0 ~ 40°C (5% ~ 85% RH, no condensation)
2	Dimensions	200mm(W) × 39.5mm(H) × 160mm(D) (w/o vertical stand and projection)
3	Weight	Approx 500g
4	Power consumption	Approx 9W

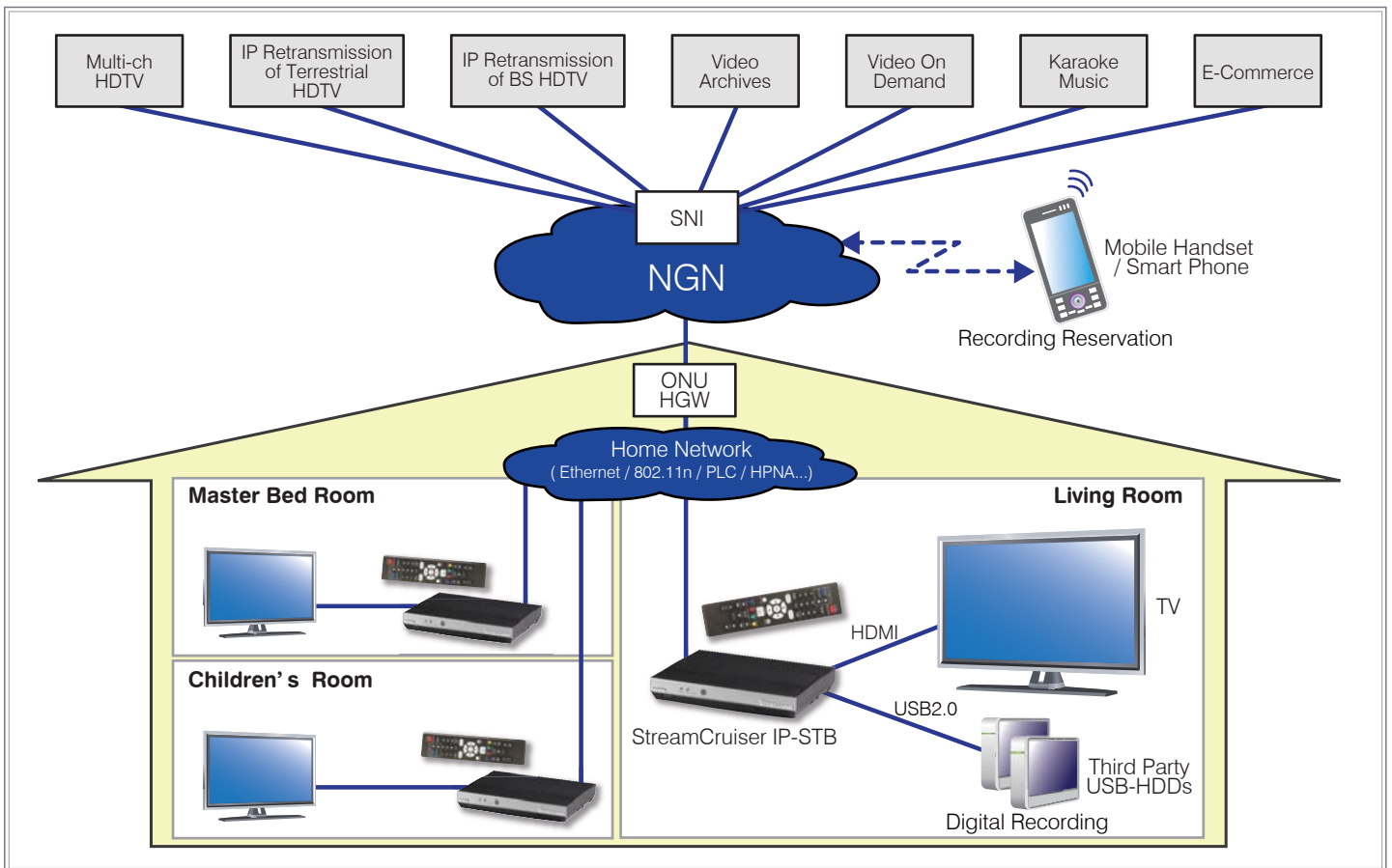
Interface

A typical example for specification

No	Input/Output	Design	Description
1	Power source	AC / DC adapter	Adapter bundle : DC12V · 2A
2	Switch	Push-button type	
3	Ethernet	RJ-45	10 / 100Base-TX Ethernet
4	USB	host A type ×2	USB2.0
5	Video out	RCA	composite signal
		S-Video outputs	Y/C signal (S2)
		D connector	component video signal (D4)
		HDMI	HDMI (HDCP)
6	Audio out	RCA × 2	analog audio
		S / PDIF	optical digital audio
7	Remote controller	IR receiver	For bundle IR remote controller
8	LED	LED ×2	3 color LED

※Please contact us for the custom development.

A Typical IPTV Service Image with using StreamCruiser® ITU-T H.721 IP-STB



SUMITOMO ELECTRIC NETWORKS, INC.
<http://www.sei-networks.com>
StreamCruiser
<http://www.streamcruiser.com>

SUMITOMO ELECTRIC NETWORKS, INC.

International Sales
 Takanawa Park Tower, 3-20-14, Higashi-gotanda,
 Shinagawa-ku, Tokyo 141-0022 Japan
f-snet@sei-networks.com

■ Please contact us regarding any inquiries you might have.

* We reserve the right to change specifications, designs and other information in this catalog without prior notice.

* StreamCruiser is a registered trademark of Sumitomo Electric Networks, Inc.

* Other company names and products mentioned herein are trademarks or registered trademarks of their respective holders.